



®

Precision in Every Dimension

Copper / Silicon Bronze (C65300) Split Bolt (Cold Formed)

Features

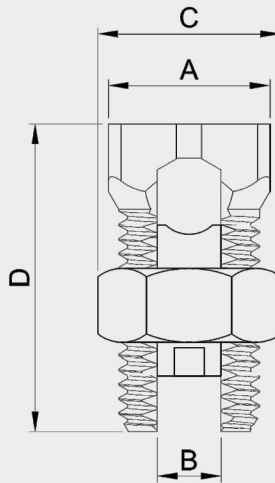
- **UL listed** for copper stranded wires only.
- Manufactured from high **strength**, high **conductivity** copper.
- Precision tooled **Cold Formed** threads.

Standards

- Tested and Listed to **UL 486A**, **UL486B** requirements.
- **CSA C22.2 No.65** Listed
- **UL 467** Listed for **Grounding** and **Bonding**, this does not apply to 3D SB-1000.
- **ROHS** compliance.

Application

- Suitable for **direct burial** application in earth and concrete.
- Splicing, tapping or terminating conductors in power and grounding electrical connection.



CATALOG NUMBER	WIRE RANGE			Recommended Torque In-lbs (N-m)	Dimensions (inch)			
	RANGE OF EQUAL MAIN AND TAP		MIN TAP WITH ONE MAX MAIN		A	B	C	D
	MIN	MAX						
3D SB-8	16 STR/SOL	8 STR/SOL	16 SOL/STR	80 (9)	0.38	0.15	0.50	0.85
3D SB-6	10 SOL/STR	6 SOL/STR	16 SOL/STR	165 (18.6)	0.50	0.17	0.63	1.05
3D SB-4	8 SOL/STR	4 STR	16 SOL/STR	165 (18.6)	0.56	0.22	0.69	1.05
3D SB-2	6 SOL/STR	2 STR	14 SOL/STR	275 (31.1)	0.69	0.33	0.82	1.32
3D SB-3	4 STR	2 STR	8 SOL/STR	275 (31.1)	0.60	0.26	0.75	1.50
3D SB-1/0	4 STR	1/0 STR	14 SOL/STR	385 (43.5)	0.73	0.38	0.94	1.77
3D SB-2/0	2 STR	2/0 STR	14 SOL/STR	385 (43.5)	0.82	0.44	1.05	1.94
3D SB-3/0	2 STR	3/0 STR	8 SOL/STR	500 (56.5)	0.82	0.48	1.05	1.94
3D SB-250	1/0 STR	250 kcmil	8 SOL/STR	650 (73.4)	1.00	0.60	1.39	2.25
3D SB-350	4/0 STR	350 kcmil	1/0 STR	650 (73.4)	1.41	0.71	1.70	2.60
3D SB-500	250 kcmil	500 kcmil	2/0 STR	825 (93.2)	1.48	0.85	1.82	2.83
3D SB-750	350 kcmil	750 kcmil	4/0 STR	1000 (113)	1.94	1.02	2.31	3.51
3D SB-1000	500kcmil	1000 kcmil	4/0 STR	1100 (124.3)	2.19	1.17	2.56	3.90

